



**COMPANY PROFILE
& EXPERIENCE OF SIMILAR WORKS
2021**



SCALING NEW HEIGHTS ...

ABOUT S3M

S3M is a professional **Design Consultancy firm** evolved out of vast experience of the founders in the field of Planning & Design Engineering.

The founding partners bring on board a cumulative professional experience of more than **90 years** in successfully delivering Industrial and Infrastructure projects.

The firm gets its name from the initials of Founding Partners – **S**hah Hiten, **S**hah Rakesh, **S**uthar Amit and **M**ankad Jasmin

S3M specialises in providing **single-noded coordinated services** across varied sectors in India and abroad.

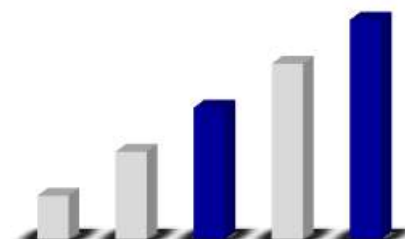
MISSION

To nurture an **Organisation** which is -

- * Based on values
- * Always update with cutting-edge knowledge
- * Rich with passionate people
- * Built with State-of-the-art infrastructure

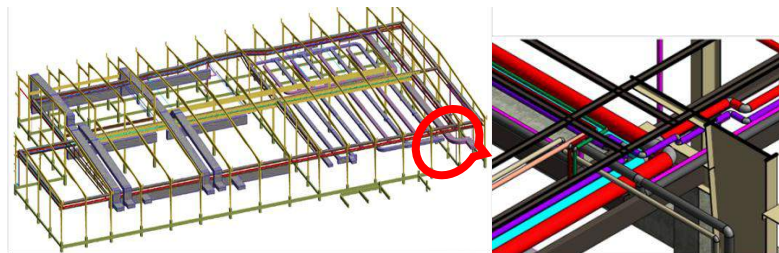
To provide **integrated solutions to the Projects** with -

- * Technical expertise
- * Friendly service
- * Sustainability perspective

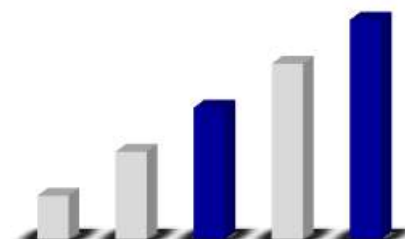


WHY S3M ?!

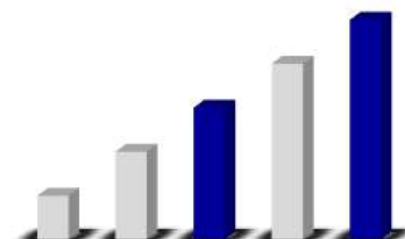
- * Rich experience of **90+ years** in delivering Engineering and Design solutions to the industry.
- * The Managing Partners have **direct involvement** and **quality control** in the Delivery of project.
- * Record delivery of projects – “**on time**” and “**within budget**” – acting as an extended arm of Client.
- * **Integrated Single Window Support** - 3D model-based process is adopted to provide Client, Designers, Construction Engineers and the Execution agencies the insight and tools to more efficiently plan, design, construct, and manage buildings and infrastructure.



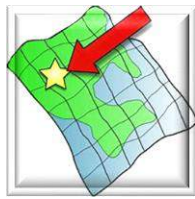
- * **S3M** considers Energy Efficiency and Sustainability as the key aspects in Planning and Design of any project since its conceptual stage – accordingly,
 - ✦ Daylight harvesting
 - ✦ water conservation by reuse/recycling of treated water
 - ✦ Energy conservation
 - ✦ Landscapes
 - ✦ maintenance of Indoor air quality for human comfort
 - ✦ use of locally available material of construction
 - ✦ energy efficient mechanical and electrical equipment are weaved into Project designs.



- * **S3M** delivers complete Design services to projects **pan India and even abroad** - Adani, Torrent, Enviro Control Associates, Dwarikesh Sugar, Grainspan Nutrients, HCPDPM, JBM, Ratnamani, Hitachi Hi-rel, Claris, TKII are valuable **Clients having long term association** with **S3M**.
- * **S3M** is currently delivering industrial projects of 60,000m² construction area (single project) and Infrastructure projects of 5100 acres in size.



SERVICES



Site selection



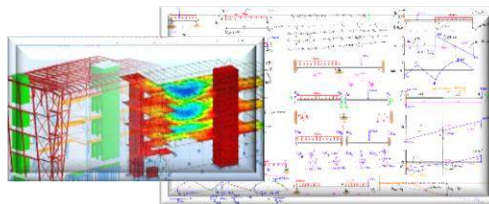
*Sourcing Assistance and
Cost Control*



*Master Plan
development*



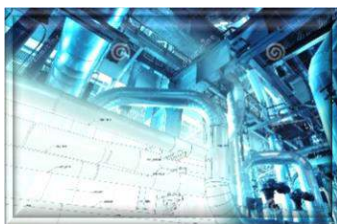
Architectural Designs



Structural Designs



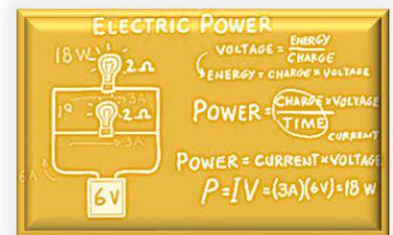
Public Health Engineering



Mechanical Utility systems



HVAC Designs



Electrical Designs



Landscape Designs



*Construction Management
Services*



Interior Designs



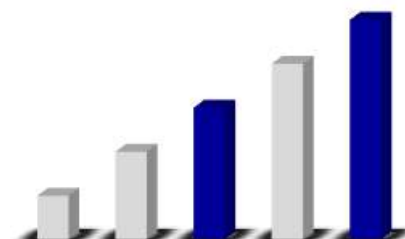
Value Engineering



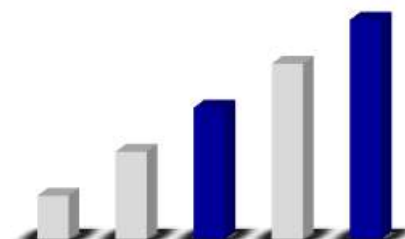
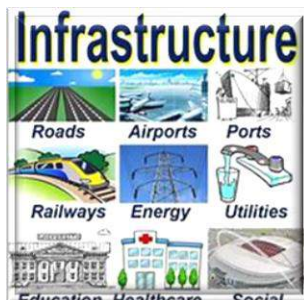
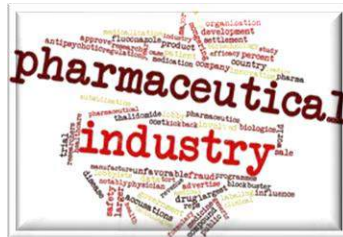
*Condition
Assessment
of existing setups*



Proof Checking

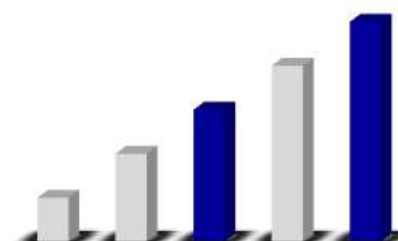


SECTORS SERVED

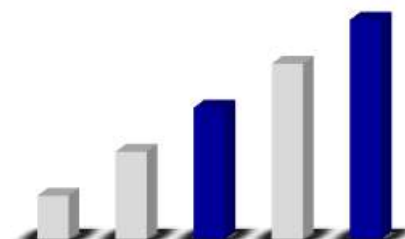


SIMILAR WORKS

| Sr. No. | NAME OF PROJECT | PRODUCT | PLOT AREA in m ² | PLANT AREA in m ² | S3M's SCOPE OF SERVICES | SALIENT FEATURES |
|---------|---|--|-----------------------------|------------------------------|--|---|
| 1 | Flex Foods' Plant near Hosur, Tamilnadu | Air drying, Freeze drying & HPU Process for Herbs, Fruits & Vegetables | 1,00,000 | 18,000 | Architecture, Civil, Structure, Infrastructure and MEP design together with Procurement services | Plant conforming to latest international norms like IFS, BRC, HACCP, FDA, FSSAI etc. |
| 2 | Instafarm Products Limited, near Mehsana | Frozen foods (Pizzas) + Sub-zero Cold Store facility | 12,000 | 4,500 | Architecture, Civil, Structure, Infrastructure and Procurement services | Plant conforming to latest international norms like BRC, HACCP, FDA, FSSAI etc. |
| 3 | Ready-to-eat Plant for Instantly Yours' at Mega food Park near Surat | Retort based products | 4,500 | 3,000 | Architecture, Civil, Structure, Infrastructure and MEP design together with Procurement services | Plant conforming to latest international norms like BRC, HACCP, FDA, FSSAI etc. |
| 4 | TGB Group's Plant near Ahmedabad | Frozen Foods with IQF, Blast Freezer, Chiller & Cold storage | 2,500 | 2,500 | Architecture, Civil, Structure, Infrastructure and MEP design | Plant conforming to latest international norms like BRC, FDA, FSSAI etc. |
| 5 | Ready-to-eat Plants for My Yummy & My Choice - at Mega food Park near Surat | Frozen foods with Spiral Freezer, Blast freezer & Cold Store facility | 10,000 | 4,500 | Architecture, Civil, Structure, Infrastructure and MEP design | Plant conforming to latest international norms like BRC, HACCP, FDA, FSSAI etc. |
| 6 | Processing facility for Rich Valley Dry Fruits Pvt. Ltd. | Dry fruit processing plant | 2,725 | 4,000 | Architecture, Civil, Structure, Infrastructure and MEP design together with Procurement and Construction Management services | G+1 structure in RCC and Terrace shed covered with Metal shed - (G+2). Cold storage facility of approx. 600m ² included in the Main plant. |



| Sr. No. | NAME OF PROJECT | PRODUCT | PLOT AREA in m2 | PLANT AREA in m2 | S3M's SCOPE OF SERVICES | SALIENT FEATURES |
|---------|---|---|-----------------|------------------|---|--|
| 7 | Bottled Water Plant for Shree Rama Newsprint Ltd at Surat, Gujarat (CLEAR Brand) | Bottled Water Plant with Pre-forms & Cap manufacturing | 10,000 | 6,500 | Architecture, Civil, Structure, Infrastructure and MEP and Fire Protection Design services together with Procurement services | Plant conforming to Indian Standards and other norms of BRC & FSSAI. |
| 8 | Poshtik Foods at Mega food Park, near Surat | Poha | 4,800 | 3,000 | Architecture, Civil, Structure, Infrastructure & MEP design with Procurement services | 2 nos.- 3000 t cap. each Silos |
| 9 | GrainSpan Nutrients Pvt. Ltd at Sonapat, Haryana | Dry milling process of maize and rice | 11,235 | 6,540 | Architecture, Civil, Structure, Infrastructure design together with Procurement services | G+2 storied process building in PEB |
| 10 | Zodiac Food Park at Amirgadh, Nr., Palanpur, Gujarat | Food Park with 2 nos. of cold stores and 4/5 production units | 66,000 | 38,000 | Architecture, Civil, Structure, Infrastructure and MEP design together with Procurement services | 2 nos. Cold Stores for Bulk Storage of Potatoes. Each having storage capacity of 7500 t. |
| 11 | Madhur Food Park at Dhule, Maharashtra. | Food Park with Pack House, Ware House & several other Units | 55,000 | | Architecture, Civil, Structure, Infrastructure and MEP design together with Procurement services | |
| 12 | SenegIndia's box storage facility at Senegal, West Africa | Potato / Onion storage | 45,000 | 10,300 | Architecture, Civil, Structure, Infrastructure and Procurement services | Bulk Storage facility for Storage of 12000 t. capacity Potatoes |

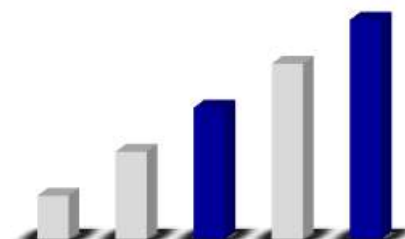


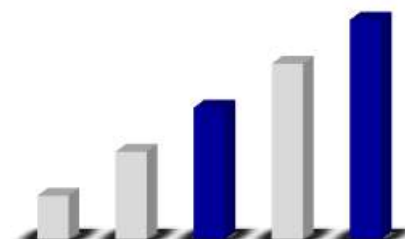
A. INSTANTLY YOURS INC., SURAT



SAILENT FEATURES

- BRC Compliant facility.
- The plant is located at Gujarat Agro Infrastructure Mega Food Park, Gujarat.
- “Ready-to-eat” Package production facility – with Kitchen & Retort process.
- Plant area divided in to different zones – depending upon the risk of contamination. Controlled entry for each Zone.
- Entry to the Plant area is through Hygiene station & Air shower only. Entry for high risk zones & low risk zones – also segregated.
- RM store, cold store, Production area has been designed on the ground floor and Packaging & storage has been designed on the first floor.
- Use of natural light through-out the Plant- even after observing all norms of hygiene.



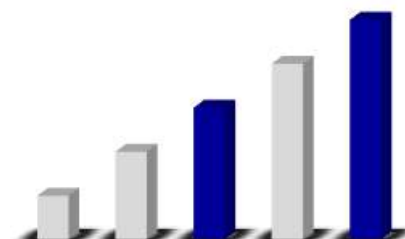


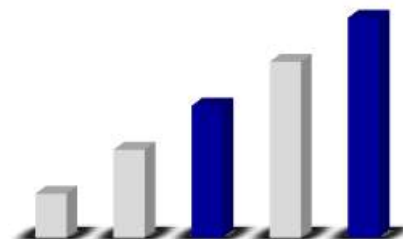
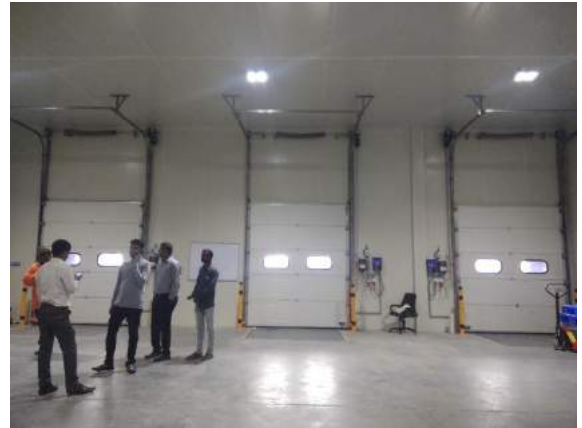
B. INSTAFARM PRODUCTS P. LTD, GANESHPURA, MEHASANA



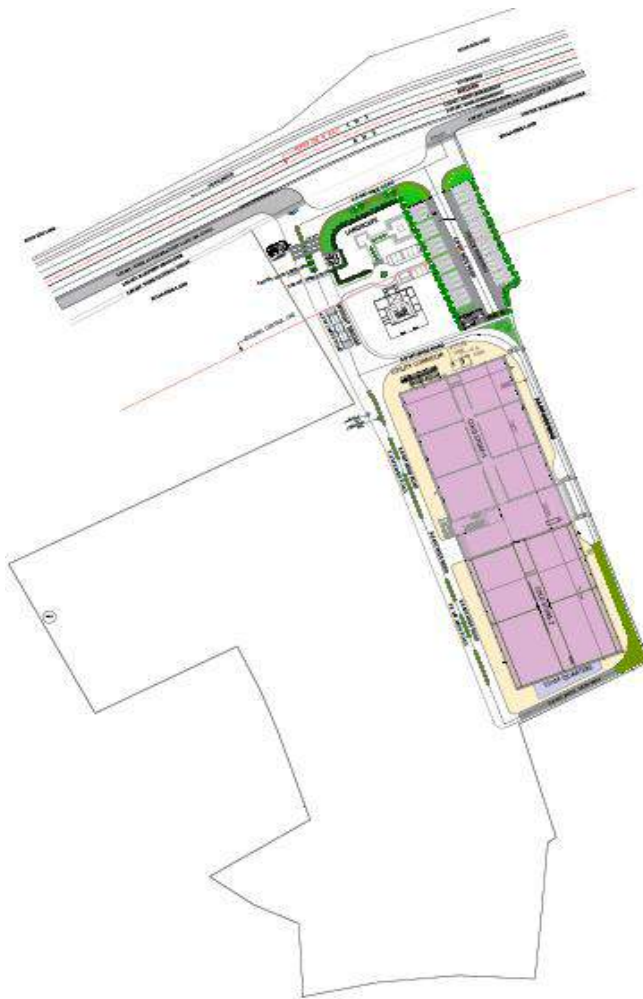
SAILENT FEATURES

- Design complies to BRC Norms.
- Complex Layout - building shape is governed by Plot Boundary.
- Main Building has sub-zero Cold Storage for Hyfun Foods and a completely independent Food Processing unit
- Entry of Workers and Office staff are planned separately.
 - Workers entry follows the Change room/Toilet → Hygiene Station → Production Area
 - Office Staff & Visitors have entry to Office at First Floor. Restricted entry to Production area is through common hygiene station.
- Raw material storage and Preliminary Process is planned at Mezzanine floor. Raw material enters at Ground Floor and goes to mezzanine floor with the use of Lift.
- Pre-processed material is taken to Production area with use of another lift opening directly to production area - to avoid contamination.
- Dispatch of Finished Products are planned separately with Ante Passage and Ante room.



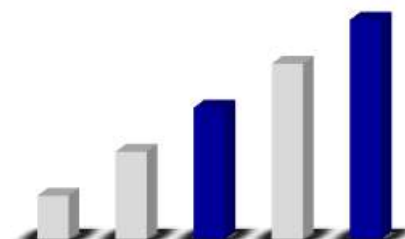


C. ZODIAC FOOD PARK, AMIRGARH, NR. PALANPUR, GUJARAT



SAILENT FEATURES

- Total land area is 66,000m².
- Phase-1 includes 2 Numbers of Bulk Potato Cold Storages, Admin Building, Workers' Hostel, Driver's rest room, Truck Parking, UG Tank and Pumphouse.
- Future Expansion includes number of Food Processing Unit depending on business demand.
- Two potato cold storages are planned with 15,100 MT capacity.
- Potatoes are stored in 4m. high heaps- inside compartments having RCC walls clad with PUF Panels.
- State-of-the-art technology from Netherland is used for maintaining suitable environment inside the Compartment & also for automatic loading & unloading of Potatoes.
- To save on space and cost, centralised loading/unloading bay for both the cold storages are planned.
- Trucks Parking and Waiting area is planned for 35 Trucks with Shed to avoid direct contact of Potato to Atmosphere/sunlight.

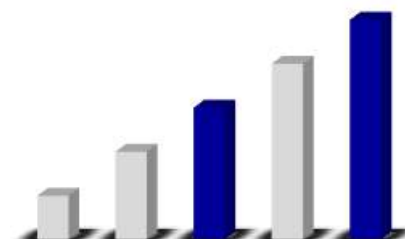


D. RICHVALLEY DRYFRUITS PVT LTD, SANAND, GUJARAT



SAILENT FEATURES

- BRC Compliant facility.
- Main Plant consists of G+2 Floors - total 4050 m2 of processing area.
- The plant is a processing unit for Almonds, Walnuts and Pistachio.
- The raw material is imported, de-shelled, cleaned, sorted and packed in this facility.
- Plant divided in to different zones of Hygiene requirements.
- PKS with epoxy joints on floor, anti-fungal paint on walls, coving at all corners, Conditioned environment at all Production areas, etc.
- Hygiene entry with Air shower cubicles at each floor, SS Hygiene stations, separate entry /exit for Staff, Raw Materials & Finished Goods, Utilities as per BRC norms, etc.
- A 3 storied cold store of 600 MT capacity having material movement through conveyor belt is proposed.

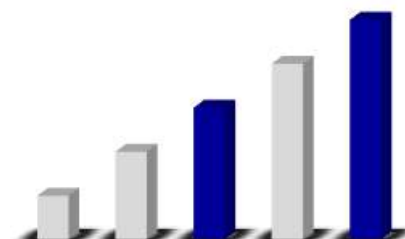


E. MY CHOICE AND MAI YUMMY FOOD UNITS, MANGROL, GUJARAT

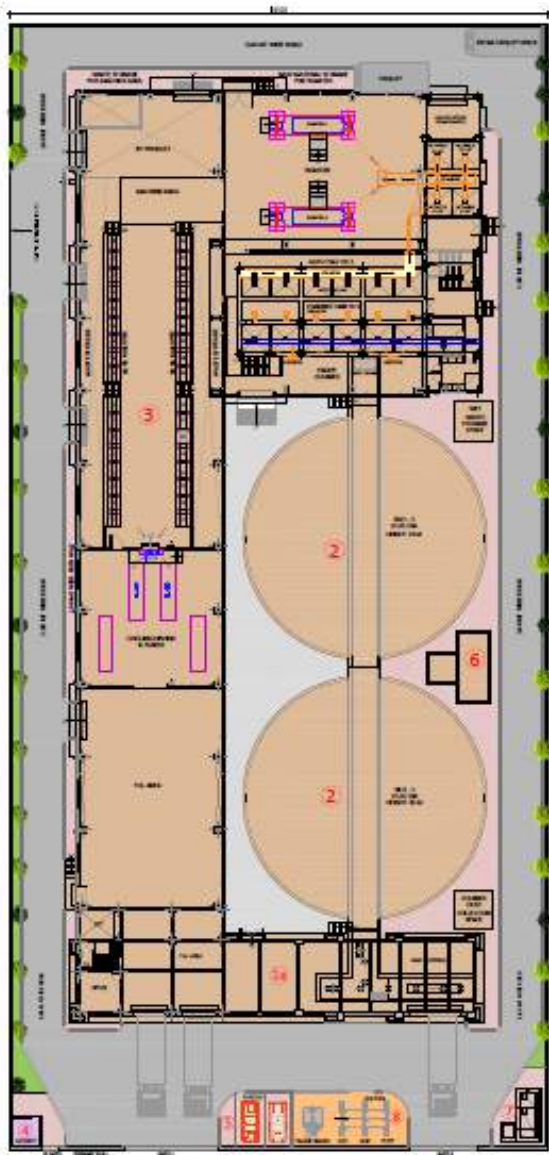


SAILENT FEATURES

- Twin Food Production units spread in 9,100 m2 of area at Gujarat Agro Mega Food park, near Surat, Gujarat.
- Each Unit has the main plant unit spread in 2050 m2 – consisting of Main Plant, Admin Building and Guest Rooms.
- Main plant will be a PEB structure with a part of the plant consisting of Mezzanine for Offices, Meeting and Guest Rooms.
- Both units will be Processing and Producing food items like Samosa, Paratha, Breads, Curries and Other Snacks.
- Blast Freezer, Spiral Freezer, Cold Store and Industrial Fryers will be part of these units.
- Entry of Workers and Office staff are planned separately.
 - Workers entry follows the Change room/Toilet → Hygiene Station → Production Area.

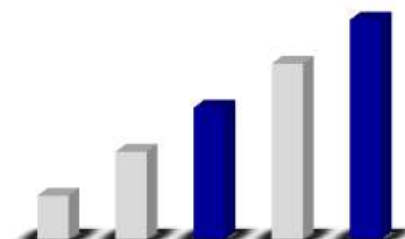


F. POSHTIK POHA, SURAT

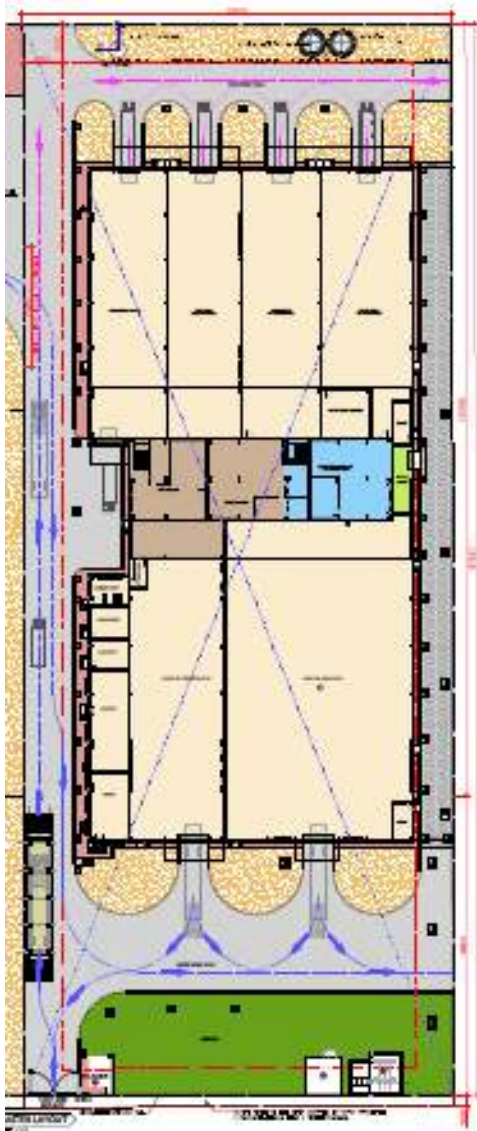


SAILENT FEATURES

- The plant is located near Surat at Gujarat Agro Infrastructure Mega Food.
- One of the most Modern Poha making Plant – in an Industry generally known for very primitive facilities.
- 2 nos Silos for R.M. Storage – each 21 m. dia & 21. m. high. Automatic handling of Raw materials (Paddy) for Cleaning & storage in Silos.
- Proper planning for Truck unloading & loading.
- Efficiency of Process flow: RM Unloading – Conveying – Storage – Soaking – Roasting – Milling – FG Packing – Dispatch Loading
- Planned storage & disposal of By-products, Fuels, Ash, etc.
- Multi storied facility with RM handling & FG storage on the upper stories.
- At plinth level Rodent protection ledge planned.
- Adequate planning for natural ventilation, dust removal & natural light usage.

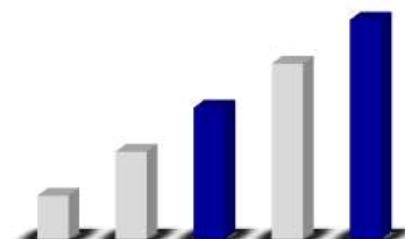


G. GRAINSPAN NUTRIENTS PVT. LTD. SONIPAT, HARYANA



SAILENT FEATURES

- Total area of plant 6540 m²
- Total plant design is divided into 3 parts - Raw Material Warehouse, Process building and Finished Good Warehouse.
- Process building consists of G+2 and G+3 Mezzanine building
- All the process machineries are supported on Mezzanines
- Number of Cut-outs are planned on Mezzanine, as the process includes lots of top to bottom and bottom to top movement.
- Circular Vehicular movement is planned

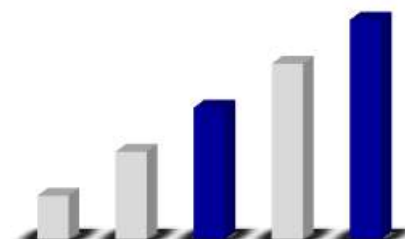


H. FLAVAROMA FLAVOURS AND FRAGRANCES (P) LTD., SANAND, GUJARAT



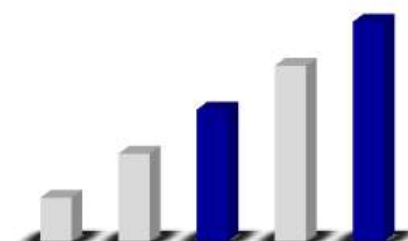
SAILENT FEATURES

- Phase-1 includes flavour building, Admin Building, Utility block & Security block.
- Fragrance plant will be designed in phase-2.
- The plot is rectangular so the design has a building on one side and a single road on the other side.
- For Hygiene, the toilet block has been designed outside the Flavour building.
- Utility block & toilet has been designed in the centre of Flavour & Fragrance plant.
- The entry of the admin staff is from the front side and the entry of workers is from the other side.
- Workers entry follows the Change room/Toilet
→ Hygiene Station → Production Area
- Based on the zoning requirements, hygiene purpose RM store, FG store & packing area are planned on the ground floor and Production area is planned on the upper floor.

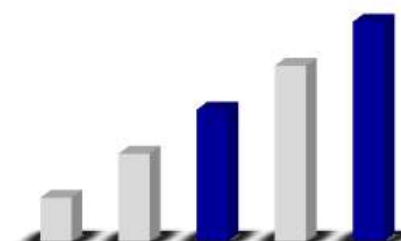


MAJOR PROJECTS

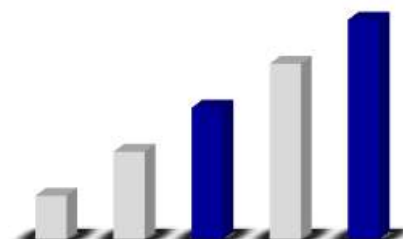
| Sr. No. | PROJECT NAME | LOCATION | S3M'S SCOPE | DETAILS |
|---------|---|-------------------------|--|--|
| 1 | Liquid fertilizer manufacturing unit for IFFCO, at Kalol (Gujarat), Aonla (UP), Phulpur (UP) | GUJARAT and UP | Architecture, Civil, Structure, Infrastructure and MEP design together with Procurement and Construction Management services | Total Construction area of approx. 40,000m² on total plot area of approx. 20 acres - Gold rated IGBC certified facilities. |
| 2 | Manufacturing unit for poly films for a leading group. | KARNATAKA | Architecture, Civil, Structure, Infrastructure and MEP design together with Procurement and Construction Management services | BOPET line (10.6m .wide – Dornier) & CP Line with approx. area of Construction of 45,000 m² on a plot measuring 50 acres. |
| 3 | Manufacturing unit for poly films for Jindal Worldwide Group (Aegios Polyplex) | NEAR AHMEDABAD, GUJARAT | Architecture, Civil, Structure, Infrastructure and MEP design together with Procurement services | BOPET line (10.6m .wide – Dornier) & CP Line with approx. area of Construction of 17,000 m² on a plot measuring 14 acres. |
| 4 | Manufacturing unit of Yizumi Advanced Processing Technology Pvt. Ltd. | SANAND, GUJARAT | Architecture, Civil, Structure, Infrastructure and MEP design together with Procurement services | Construction area of 22,000 m² - on a Plot area of approx. 20 acres . |
| 5 | Manufacturing unit of Kalpataru Power Transmission Ltd | RAIPUR, CHHATISGARH | Architecture, Civil, Structure, Infrastructure and MEP design together with Procurement services | Construction area of 20,000 m² - having Railway structure fabrication facility & Galvanizing line - on a Plot of approx. 20 acres . |
| 6 | Expansion of Sumilon Polyester's Plant | GANDHIDHAM, GUJARAT | Architecture, Civil, Structure and Infrastructure design together with Procurement services | Expansion to develop new BOPET line & new Chips manufacturing facility - together with Thermic Fluid Heaters, 20 MW Captive Power plant, etc. - having approx. construction area of 30,000 m² in a Plot of approx. 25 acres |
| 7 | 100KLPD capacity Distillery for Dwarikesh Sugar Industries Ltd. | NEAR BIJNOR, UP | Architecture, Civil, Structure and Infrastructure design together with Procurement services | Molasses based Distillery with 8 MW Captive Power plant, Boiler Foundation with 72 m. high RCC Chimney, Bagasse Storage Shed & Conveying System, ETP, etc. having Disillation Building of 30 m. height. - for 100 KL / Day |
| 8 | Maize milling Plant for Grainspan Nutrients Pvt. Ltd. | SONEPAT, HARYANA | Architecture, Civil, Structure, Infrastructure and MEP design together with Procurement services | 6,500m² Construction area on a Plot of 11,200 m² having G+2 Process Building in Steel structure |
| 9 | Storm Water drainage System of Dhamra Port for Howe India | DHAMRA, ORISSA | Civil, Structure & Infrastructure Design together with Procurement services | Storm water Drainage system for a catchment area of 5,100 acres - including outfall structures in Sea |
| 10 | Zodiac Food Park at Amirgarh | PALANPUR, GUJARAT | Architecture, Civil, Structure, Infrastructure and MEP design together with Procurement services | Construction area of 36,000m² on a plot measuring approx. 16 acres for Food Sector Units. |
| 11 | Manufacturing plants for CMR NIKKEI India Pvt. Ltd. (Vendor for Tata Motors & Suzuki Motors) at Vanod, Surendranagar, for CMR Totyotsu Aluminium India Pvt. Ltd. at Vallam, Vadagal, Sriperumbudur in Chennai and for CMR (Century Metal recycling) at Halol, Vadodara, Gujarat | GUJARAT and TAMIL NADU | Architecture, Civil, Structure, Infrastructure and MEP design together with Procurement and Cnstruction Managemnet services | Construction of total 20,000m² on a total plot measuring 12 acres with furnace foundations of 100t/day capacity. |
| 12 | Ratnamani Metals' L - saw Plant, Spiral Plant, C - saw Plant and Coating Plant (Pipe manufacturing facility) | ANJAR, GUJARAT | Architecture, Civil, Structure, Infrastructure and MEP design together with Procurement services | Main plant buildings of 65,000m² on a plot measuring approx. 20 acres. Building has several cranes of 25t and 15t capacity. |
| 13 | Cable manufacturing unit for TG Cables - Advait Infra at Sanand | SANAND, GUJARAT | Architecture, Civil, Structure, Infrastructure and MEP design together | Main plant building of 10,500m² on a plot measuring 5 acres. |



| Sr. No. | PROJECT NAME | LOCATION | S3M'S SCOPE | DETAILS |
|---------|--|--|--|---|
| 14 | Ktex Non Woven's Spun bonded non-woven Textile Manufacturing plant near Rajkot, Gujarat | RAJKOT, GUJARAT | Architecture, Structure, Civil & MEP Design together with Bid Documents & related services . | Plant & Non Plant Buildings of approx. 9,000 m2. , External development works like Roads , Storm water drainage, etc. <u>Air conditioned plant designed for dust control & hygiene requirements.</u> |
| 15 | Manufacturing plant for Energy Mission Machineries (India) Pvt. Ltd. | SANAND, GUJARAT | Master planning, Architecture, Civil, Structure, Infrastructure and MEP design together with Procurement services | Plant & Non Plant Buildings of approx. 9,000 m2. , External development works like Roads , Storm water drainage, etc. |
| 16 | Manufacturing plant for RADIANT Industries Limited | VIRAMGAM, GUJARAT | Architecture, Civil, Structure, Infrastructure and MEP design together with Procurement and Cnstruction | Construction of 8,400m2 on a plot measuring 5 acres. |
| 17 | Manufacturing plant for Rubberking Tyres Pvt. Limited | VIRAMGAM, GUJARAT | Architecture, Civil, Structure, Infrastructure and MEP design together with Procurement services | Main plant building of 7,000m2 on a plot measuring approx. 2.0 acres. Building height of 20m and crane of 15t capacity. |
| 18 | Manufacturing plant for Sellowrap EPP | KADI, GUJARAT | Architecture, Civil, Structure, Infrastructure and MEP design together | Construction of 7,000m2 on a plot measuring 2.5 acres. |
| 19 | Manufacturing plant for German MNC - SUSPA Pneumatics India Pvt. Ltd. | SANAND, GUJARAT | Architecture, Civil, Structure, Infrastructure and MEP design together with Procurement and Construction Management services | Main plant building of 6,000m2 on a plot measuring approx. 3.0 acres. 2500m2 of the plant area shall be fully air-conditioned. |
| 20 | Manufacturing plant for Technico Industries Ltd. at Vanod, Surendranagar | NEAR MARUTI SUZUKI'S PLANT IN BECHARAJI | Architecture, Civil, Structure, Infrastructure and MEP design together with Procurement services and Construction Management | Press shop building with 600t and 1000t capacity press, floor designed for 10 t/m2 load in a buidling with 6,000m2 area and 12m eaves height. Total plot area of 12acres to be developed in phases. |
| 21 | Processing facility for Rich Valley Dry Fruits Pvt. Ltd. | SANAND, GUJARAT | Architecture, Civil, Structure, Infrastructure and MEP design together with Procurement and Construction Managmenet services | G+2 storied Main plant building of 4000m2 on a plot area of 2725m2. G+1 structure in RCC with Terrace shed covered with Metal shed. Cold storage facility of approx. 600m2 included in the Main plant. |
| 22 | Ready-to-eat Plant for Instantly Yours' at Mega Food Park | SURAT, GUJARAT | Architecture, Civil, Structure, Infrastructure and MEP design together with Procurement services | Plant area of 3000m2 on a plot of 4500m2 to process Retort based products - Food grade finishes provided. Plant conforming to latest international norms like BRC, HACCP, FDA, FSSAI etc. |
| 23 | Ready-to-eat Plants for My Yummy & My Choice at Mega Food Park | SURAT, GUJARAT | Architecture, Civil, Structure, Infrastructure and MEP design together with Procurement services | Plant area of 4500m2 on a plot of 10000m2 to process Frozen foods + Sub zero Cold store facility. Plant conforming to latest international norms like BRC, HACCP, FDA, FSSAI etc. |
| 24 | Poshtik foods at Mega Food Park | SURAT, GUJARAT | Architecture, Civil, Structure, Infrastructure and MEP design together with Procurement services | Plant area of 3000m2 on a plot of 4800m2 to process Poha; including 2 nos. 3000t capacity each Silos. Plant conforming to latest international norms like BRC, HACCP, FDA, FSSAI etc. |
| 25 | 100 MLD Sewage Treatment Plant at Hebbal for EPC Contractor Enviro Control Associates | BANGLORE, KARNATAKA | Structural Design Services | Large Sewage treatment Plant having cost of Works for which structural design services provided as Rs. 35 CR |



| Sr. No. | PROJECT NAME | LOCATION | S3M'S SCOPE | DETAILS |
|---------|---|---|--|--|
| 26 | Storm water drainage system at Vizhinjam Port, Kerala for Howe Engg., Adani Group | KERALA | Civil & Structural Design , BOQ Development | Storm water drainage system for the Port having hilly Catchment area of approx. 1200 acres having outfall in Sea. |
| 27 | 40 MLD Effluent Treatment plant at GIDC, Saykha for EPC Contractor Enviro Control Associates | BHARUCH, GUJARAT | Structural Design services | Approxiamte cost of Works for which structural design services provided is Rs. 50 CR |
| 28 | Expansion of IIM, Ahmedabad campus for HCP Architects | AHMEDABAD, GUJARAT | Structural Design of proposed Academic Blocks and Sports facility | Approximate area for which S3M is providing its services is 20,000 m2. |
| 29 | Administrative Business Centre (including Data Centre) for Dholera, SIR for HCP Architects | AHMEDABAD, GUJARAT | Structural Design service for Blast Resistant building | Approximate area for which S3M has provided services is 15,000m2 |
| 30 | Paediatric Primary Health Center for Tornascent - a subsidiary of Torrent Power | SURAT, DAHEJ and INDRAD, GUJARAT | Structural, Civil and infrastructure design | Approximate Built up area of 3500 m2. |
| 31 | MRS Bearing's Manufacturing Plant at Lakhtar | SURENDRANAGAR, GUJARAT | Architecture, Civil, Structure, Infrastructure and MEP design together with Procurement services | Construction of 5,000m2 in first phase on a plot measuring 7.5 acres. |
| 32 | UNITEX's Manufacturing unit (Vendor for Tata Motors & Suzuki Motors) near Vithalapur, Gujarat | NEAR MARUTI SUZUKI'S PLANT IN BECHARAJI | Architecture, Structure, Civil & Fire Protection system Design together with Bid Documents & related services . | Plant & Non Plant Buildings of approx. 8000 m2., External development works like Roads , Earthwork, etc. |
| 33 | Closed Storage facility for HOWE Engineering Projects (India) Pvt. Ltd (an Adani group Company) | CHENNAI | Structural design and preparation of Bill of quantities | Temporaray steel shed of 45m span and 400m length at Katupalli Port Complex at Katupalli village near Ennore of Chennai. Godown area of 36000m2 to be developed for fertiliser bagging. Approximate weight of structural steel used is 750 t. |
| 34 | A "Ready-to-eat" snacks plant for Instafarm products | MEHSANA, GUJARAT | Master planning, Architecture, Civil, Structure, Infrastructure and MEP design together with Procurement services | Construction of 4,100m2 on a plot area of 9,500m2 . Design to be provided alongwith Coordination work related to Refrigeration piping & racking system at Cold store. |
| 35 | Manufacturing facility for JAIVEL AEROSPACE | SANAND, GUJARAT | Master planning, Architecture, Civil, Structure, Infrastructure and MEP and Fire Protection Design services together with Procurement services | Construction of 4,000m2 on a plot area of 19,999m2 . Design to be provided alongwith Coordination work related to Refrigeration piping & racking system at Cold store. |
| 36 | Manufacturing facility for Bottled Water Plant for SHREE RAMA NEWSPRINT LTD | SURAT, GUJARAT | Master planning, Architecture, Civil, Structure, Infrastructure and MEP and Fire Protection Design services together with Procurement services | Manufacturing facility of 6,500m2 construction area on a plot area of 10,000m2 |



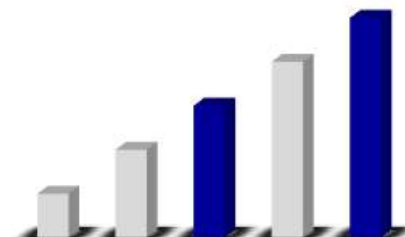
PROJECT GALLERY



SUSPA PNEUMATICS (INDIA) PVT LTD.'s Pneumatic spring Manufacturing plant at SANAND



TECHNICO INDUSTRIES LTD. AT VANOD, SURENDRANAGAR - an auto-ancillary vendor unit for Suzuki Motors at Becharaji

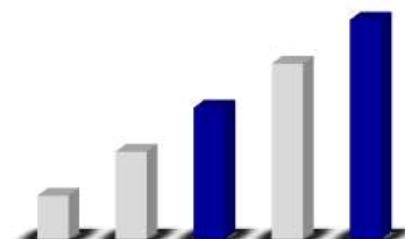




TG ADVAIT INDIA PVT. LTD. – an Indo-Chinese MNC plant at SANAND



**CENTURY METAL RECYCLING NIKKEI (INDIA) PVT. LTD. – a metal recycling unit at Becharaji
(vendor of Maruti Suzuki)**

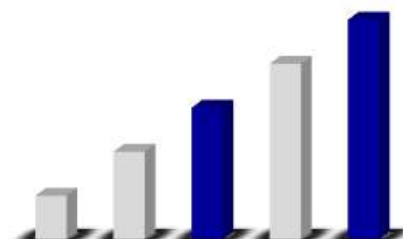




RADIANT POLYMERS PVT. LTD. AT VANI, VIRAMGAM



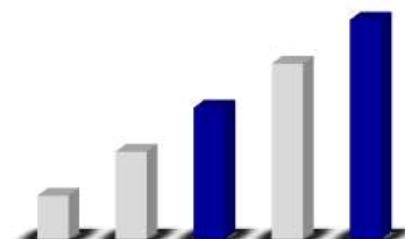
**ENERGY MISSION MACHINERIES
INDIA PVT. LTD.
AT SANAND**



**LIBRA STAMPINGS LLP
AT SANAND**

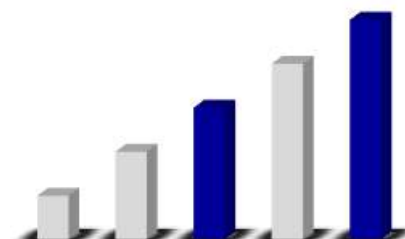


ALP NISHIKAWA AT SANAND





KTEX NON WOVEN LTD. *Spun bonded non-woven Textile Manuf. plant near Rajkot*



MANAGEMENT



HITEN J. SHAH, Managing Partner

M.E. (STRUCTURES)

- With huge exposure to the industry in India as well as abroad, Hiten's expertise of Sourcing Services & in-depth knowledge of Project execution – together with Design background - has benefitted successful commissioning of large, time bound Projects.
- Visiting faculty for PG course in Structural Design at CEPT & NIRMA University, Ahmedabad



RAKESH H SHAH, Managing Partner

M.E. (STRUCTURES)

- A Highly Respected and Passionate Structural Designer, Rakesh remains updated about latest software tools for Structural designs. He leads Structural Design teams for large and complex projects.
- Visiting faculty for PG course in Structural Design at CEPT University & NIRMA University.



AMIT SUTHAR, Managing Partner

M.E. (STRUCTURES)

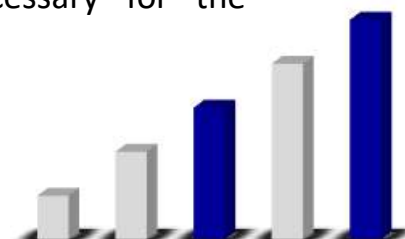
- An acknowledged expert in Structural design of Heavy Engineering works like Captive Power Plants, Cement Plants & Material Handling systems such as Coal, Lignite & Ash.
- Apart from Structural Engineering, Amit is an IT worm and has created a State-of-Art IT infrastructure at **S3M**



JASMIN MANKAD, Managing Partner

M.E. (STRUCTURES)

- Jasmin has vast experience of delivering large projects with complex utilities & maintains strict control over time & cost aspects.
- With the exposure to varied industries, she also enjoys tracking the overall industrial development scenario - necessary for the growth of **S3M**.



EXPERTS



PRAMOD SINGH

B.E. (MECHANICAL)

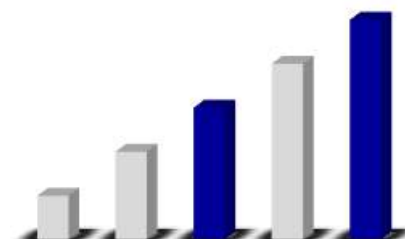
- Mr. Singh has rich experience of 33 years on Shop floor, designs and consultancy services.
- Has delivered end to end Engineering in wide range of green field and LEED certified projects.
- Is a member of ISHRAE – Gujarat Chapter and also a member of Fire Security Association of India – Gujarat Chapter. Also, a Certified Energy Manager with BEE.



D. S. PRUTHVI

B.E. (ELECTRICAL)

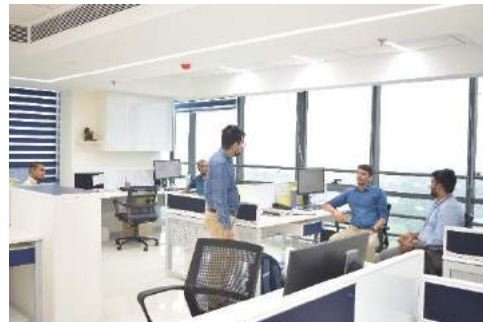
- Mr. D. S. Pruthvi carries more than 30 years of experience providing Electrical designs for green field and LEED certified projects.
- Energy conservation measures, Equipment audit and Power system analysis as desired for the projects are also coordinated with his expertise.
- Engineering Design capabilities of 100MW at single location.



INFRASTRUCTURE

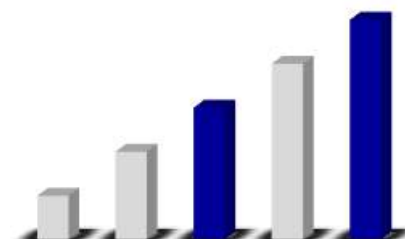
S3M Office, with an area of 8500sq.ft. is on the 16th floor of Westgate building located in the most happening business area – the S.G. Highway, of Ahmedabad.

It has an open office setup with complete transparency.

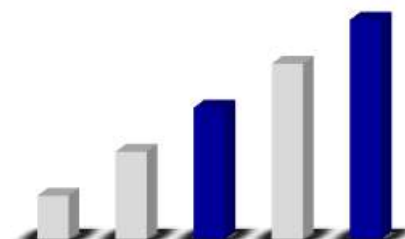
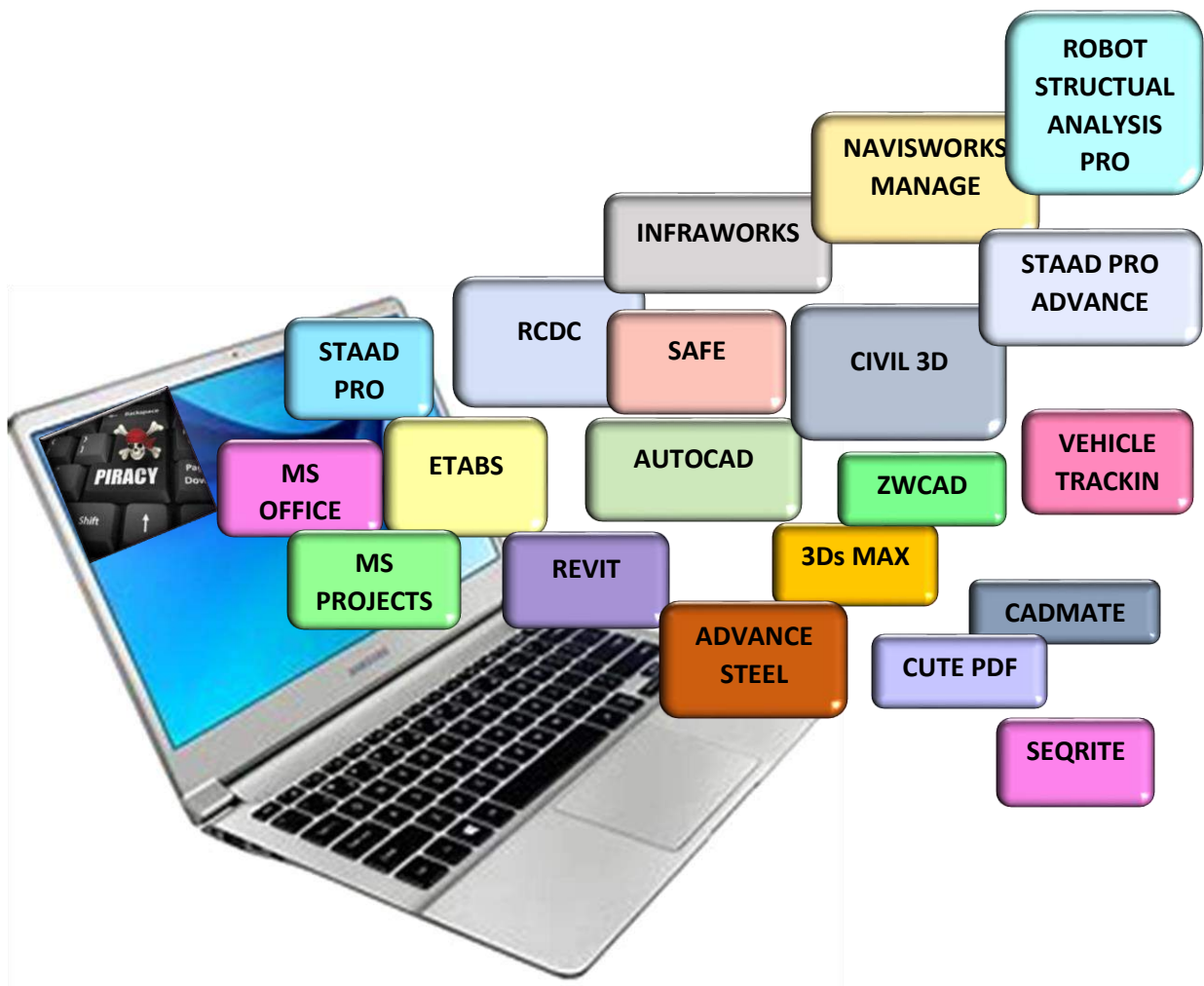


Total strength of more than 70 technical experts as below form the backbone of **S3M**:

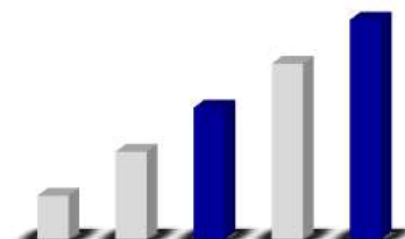
- * *Managing Partners – 04*
- * *Senior Associates – 03*
- * *Architects – 04*
- * *Structural Engineers – 8*
- * *Infrastructure Engineers – 02*
- * *Project Managers – 06*
- * *Quantity Surveyors – 03*
- * *CAD technicians – 17*
- * *Supporting staff – 04*
- * *Site Engineers – 06*
- * *MEPF & HVAC Team – 35*



With complete thrust on NO-PIRACY policy, **S3M** possesses licensed software as listed below for the Design, Analysis and Drafting purpose:



CLIENTELE







RALLIS INDIA LIMITED



CEPT
UNIVERSITY



lenovo 联想



Panasonic



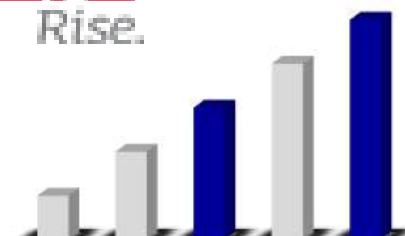
POLYPLEX

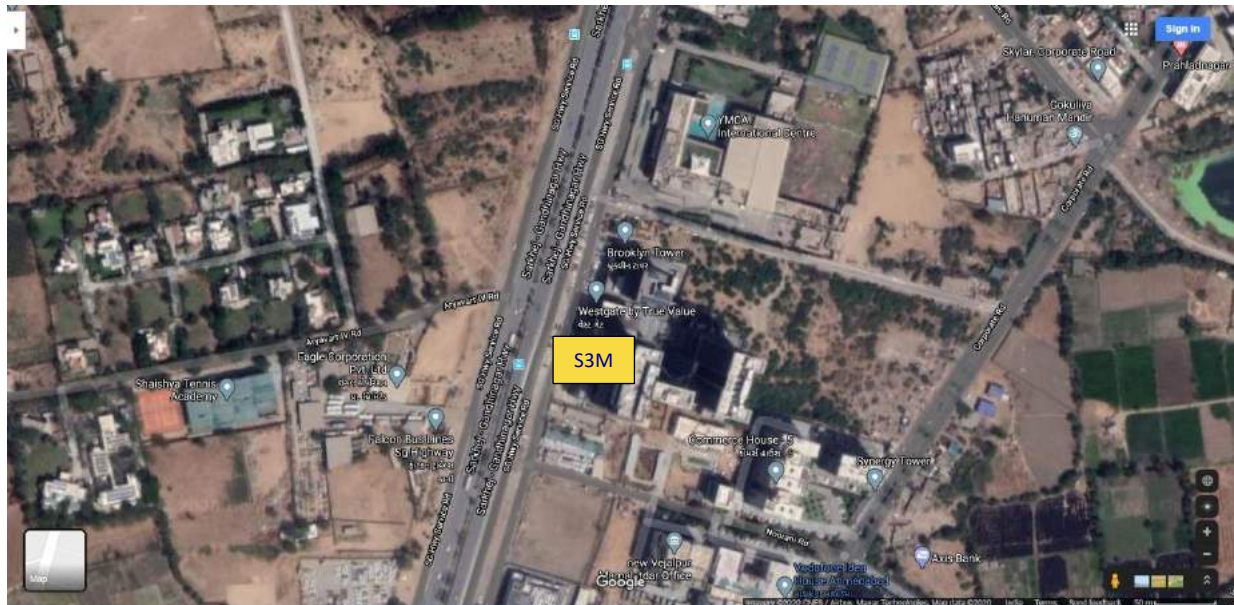


BHARAT FORGE



Mahindra
Rise.





we are at.....

S3M Design Consultants LLP

1607 to 1611 Block D,

WESTGATE BUILDING,

NEAR YMCA CLUB,

S.G. HIGHWAY

AHMEDABAD – 380 015

PHONE : 079-66118122 / 23

MAIL : s3m@s3mconsultants.com

WEB : www.s3mconsultants.com

